

The plague came from germs called *pasteurella pestis*

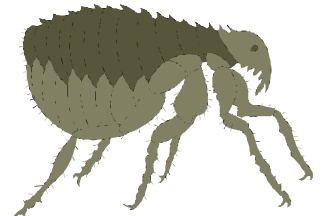
The plague germ lived in rats' blood

The fleas infected other rats and humans with plague. Soon almost half the people in England were dead

This made the rats very sick



Fleas sucked the rats' blood



When the rats' died the fleas jumped on to humans

The flea bit another human



When the human died, the flea jumped on to another rat or human

The fleas bit the humans



The humans died

